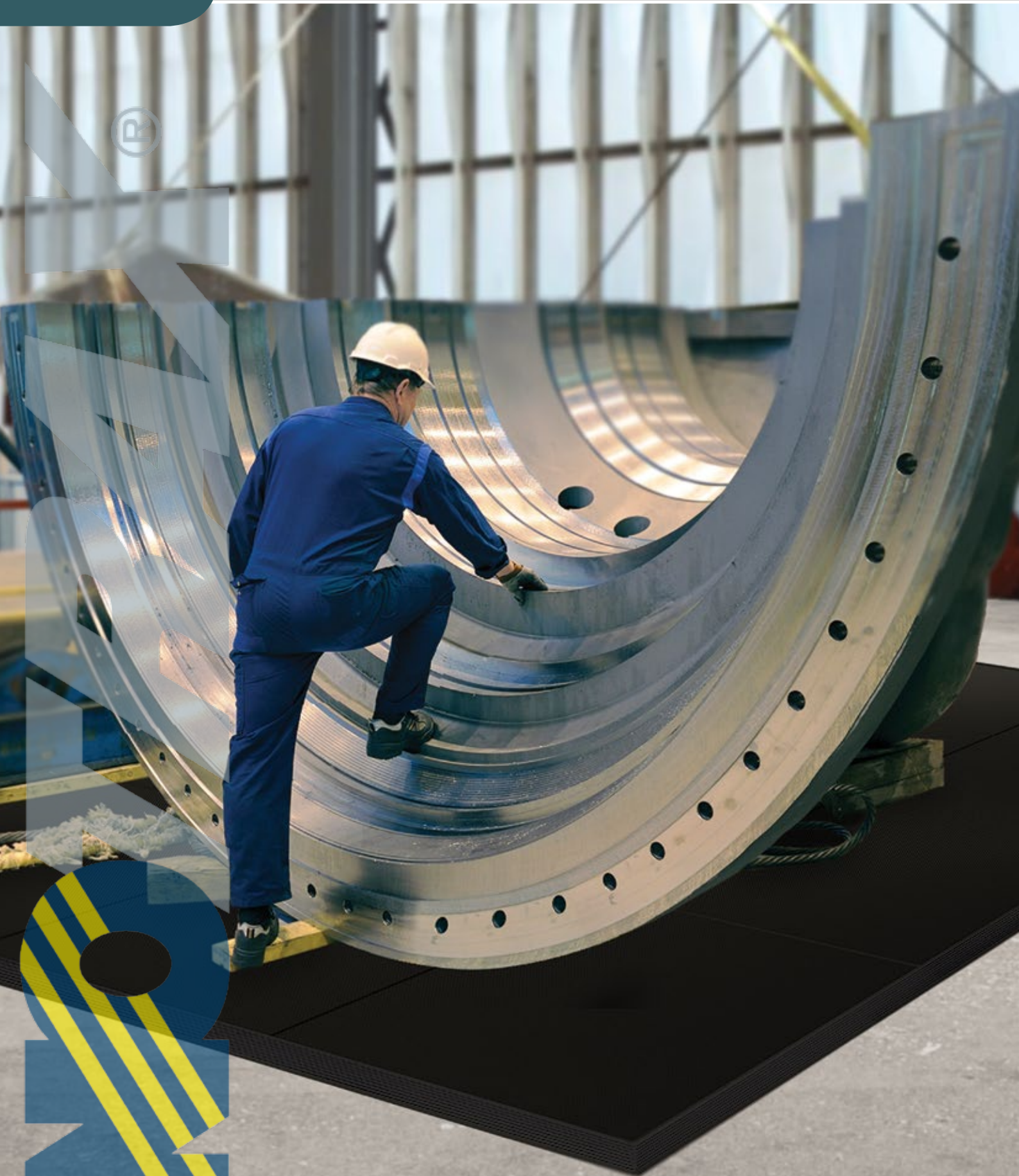


Industrial Specialties - Shock Absorbing Matting

Slabmat Carré™

040



Slabmat Carré™

Solutions to Protect Floors and Equipment

Durable protection mats protect both floors and heavy equipment from damage.

The thick platform can withstand heavy weights while the non-slip textured top surface ensures sure footing and freedom of movement.

Made of tough rubber compounds that make the mats virtually indestructible. Free of DOP, free of DMF, free of ozone depleting substances, free of silicone and free of heavy metals.

040 Slabmat Carré™

High quality 100% natural rubber mat that absorbs shock of fallen materials and protects floors and equipment.

These interlocking mats allow on-site customization. Units of 91 cm x 91 cm can be easily laid out from wall to wall or as islands, in any direction or shape. Bevelled solutions; allow out and inside corners.

Recommended uses:

- Heavy duty - dry areas for storage of heavy industrial equipment such as mould tools and engine blocks. Also suitable for gyms, weight rooms, skating rinks, golf courses, trailers and stables.

Specifications:

- Heavy duty 100% natural rubber compound
- Overall thickness: 13 mm
- Weight: 18 kg per m²

Colours:

- Black

Stock sizes:

- 91 cm x 91 cm

Accessories:

- Sturdy male and female attachable bevels 91 cm x 10 cm black

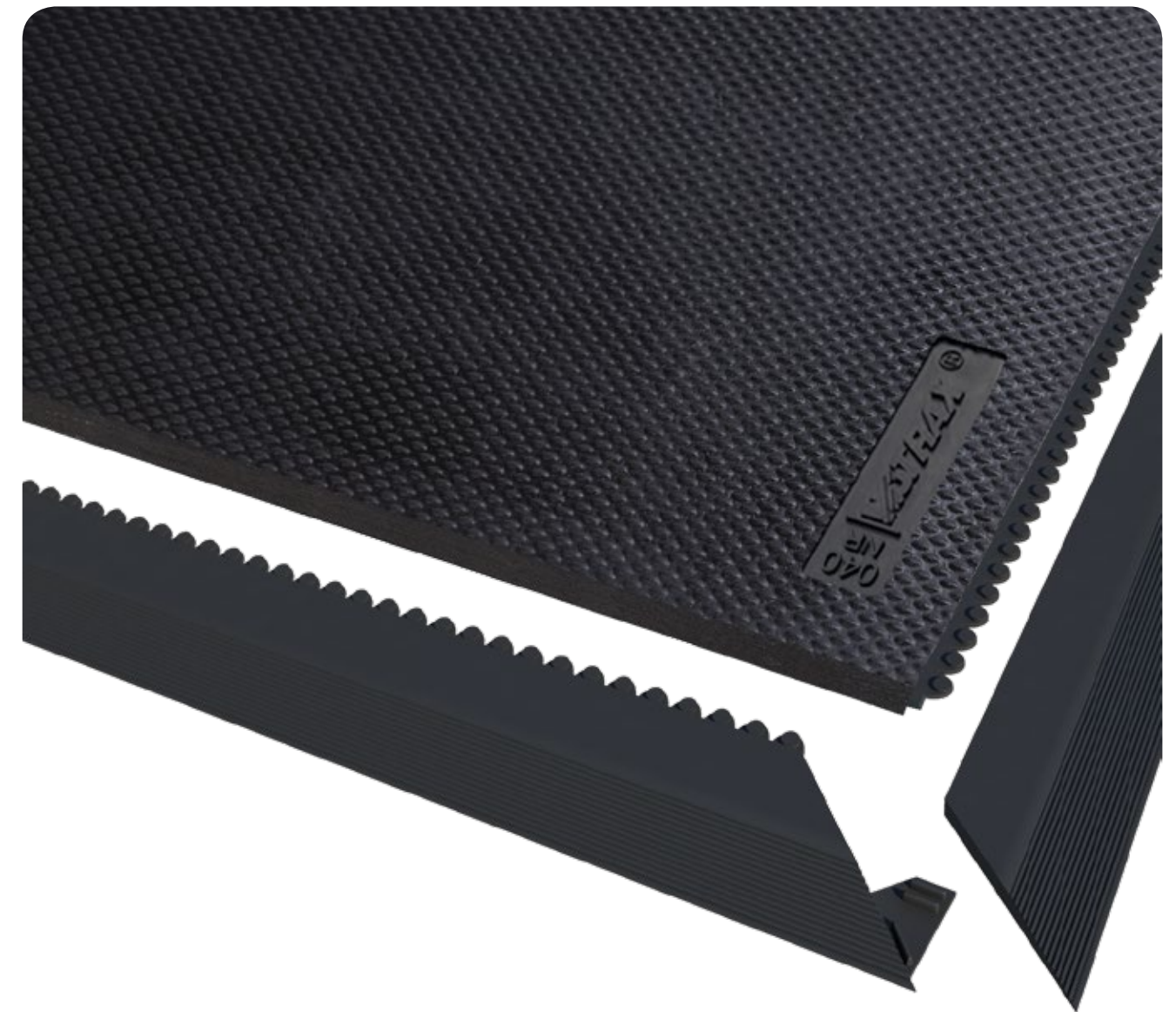
PRODUCT TESTING

Wear resistance

Slip resistance

Anti-fatigue

GOOD BETTER BEST



040 Slabmat Carré™

Art. Nr.	Sizes	Weight kg
04050033BL	91 cm x 91 cm	16 kg

Slabmat Carré™

GENERAL DESCRIPTION

Designation	Industrial Matting		
Type	Shock Absorbing		
Description	Modular system, Textured top surface which provides traction		
Surface Pattern			
Category	Best		
Recommended Use	Heavy duty – dry industrial environments		
Colours	Black		
Dimensions	Standard Sizes	Full Rolls	Custom Lengths
	91 cm x 91 cm	N/A	N/A
Special Remarks	Male and female attachable ramps in 10 cm x 91 cm, Black		
Accessories	None		

TECHNICAL SPECIFICATIONS

Material	100% natural rubber
Backing	
Process	Compression moulding
Weight	19 kg/m ²
PVC thickness	
Foam thickness	
Overall Thickness	13 mm

TESTS

Compression Deflection US	ASTM D575	@ 25% 33.3 lb/in ²
	ASTM D575	@ 50% 33.3 lb/in ²
Foam Battery	ASTM D3574	
Abrasion Resistance	ASTM D3884-01	5000 cycles 2.90 gr weight loss
Static Coefficient of Friction	ASTM C1028-96	0.68
Elongation	ASTM D412	165.7%
Breaking Load	ASTM D412	44 lb
Graves Tear Strength	ASTM D1004	55.4 lb
Hardness	ASTM D2240-02	67 Shore A
Anti-Slip	DIN 51130	R9
Critical Radiant Flux	ASTM E-648	
Fire Retardancy	DIN4102 EN 13501-1	
Flammability Test	ASTM D2859	Pass
ESD	ANSI ESD S7.1 50% Humidity	
Chemical Resistance		
Sustainability	<ul style="list-style-type: none"> • Recyclable material • 100% recycled PVC top surface • REACH compliant (Registration, Evaluation, Authorization and Restriction of Chemicals) 	