

Product Specification Sheet

Product name – Semi Dome Bolt Down Stainless Steel Bollard Ø114mm (1200 h)

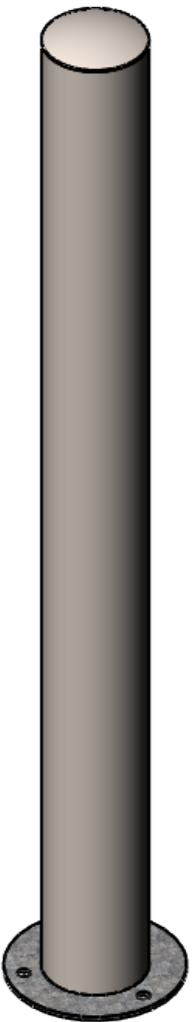
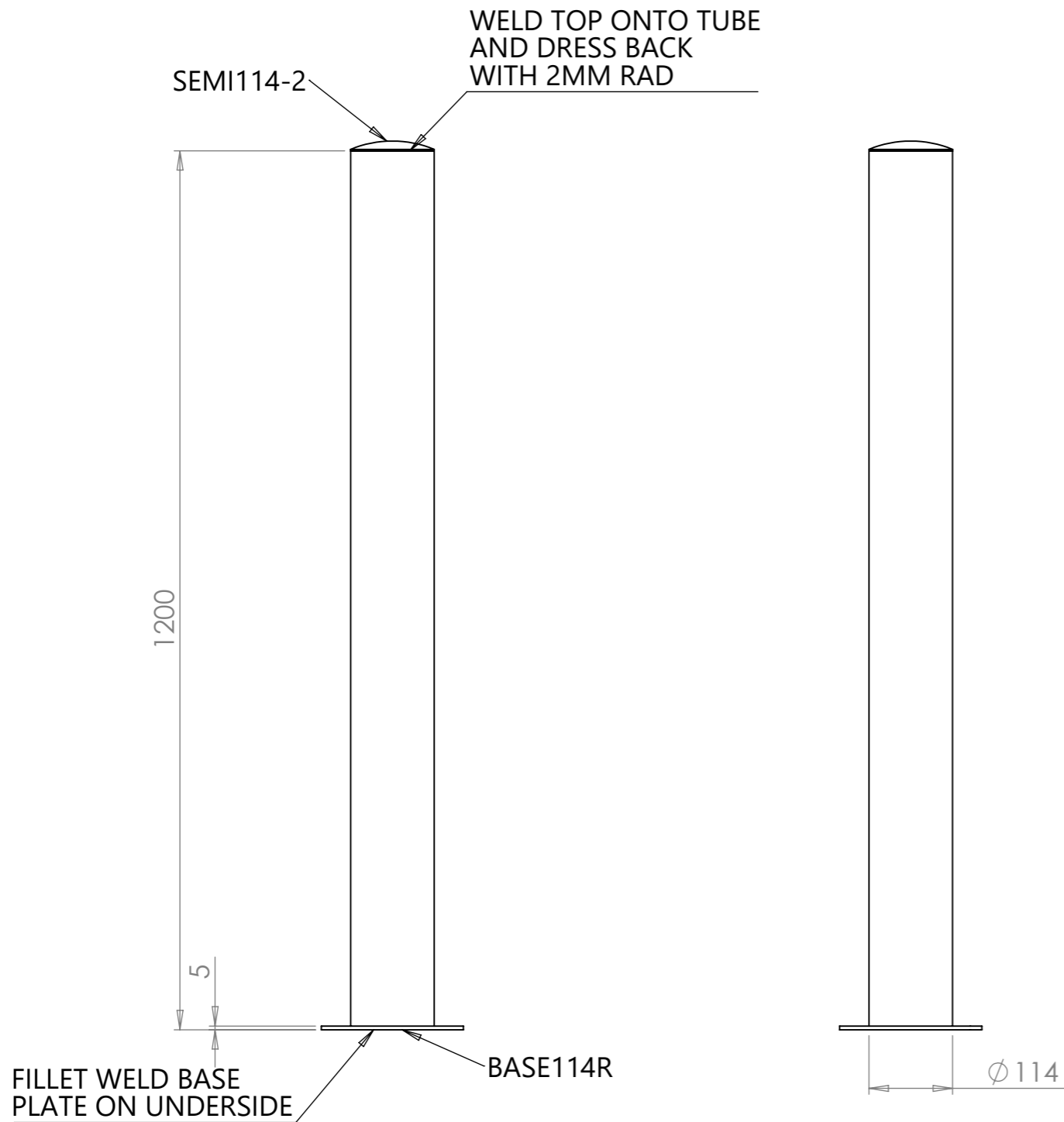
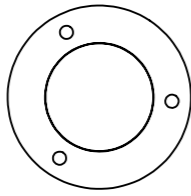


Manufacturer / Brand	Pittman®
Warranty	1 year manufacturer's warranty
Material	304 grade stainless steel
Components	Single bollard with base plate
Dimensions	1200(H) x 114(Ø)mm
Features	304 grade stainless steel Suitable for non-coastal areas Bolt down easily Semi dome design for modern settings

Ireland:
B2 Athy Business Campus
Athy, Co. Kildare R14 PK74
Ph: 01 531 2777
Email: sales@pittman.ie

United Kingdom:
1310 Solihull Parkway, Birmingham Business Park
Birmingham B37 7YB
Ph: 0121 630 3527
sales@pittman.uk

ITEM NO.	PART NUMBER	QTY.
1	SEMI114-2	1
2	Tube 114 x 2 x 1200 Long	1
3	BASE114R	1



DEBURR AND BREAK SHARP EDGES DO NOT SCALE DRAWING	DRAWN: CAB	DATE: 01/09/15	REVISION: A
	pittman		
UNLESS OTHERWISE SPECIFIED: DIMENSIONS ARE IN MILLIMETERS TOLERANCES: LINEAR:±1MM ANGULAR:±1DEG	TITLE: BOLLARD 114 Ø X 1200MM SEMI DOME BASE PLATED		
	DWG NO. BOL-114-D1200-B-0		
	FINISH: SEE JOB SHEET	SCALE: 1:5	A3
MATERIAL: SEE B.O.M			SHEET 1 OF 1