

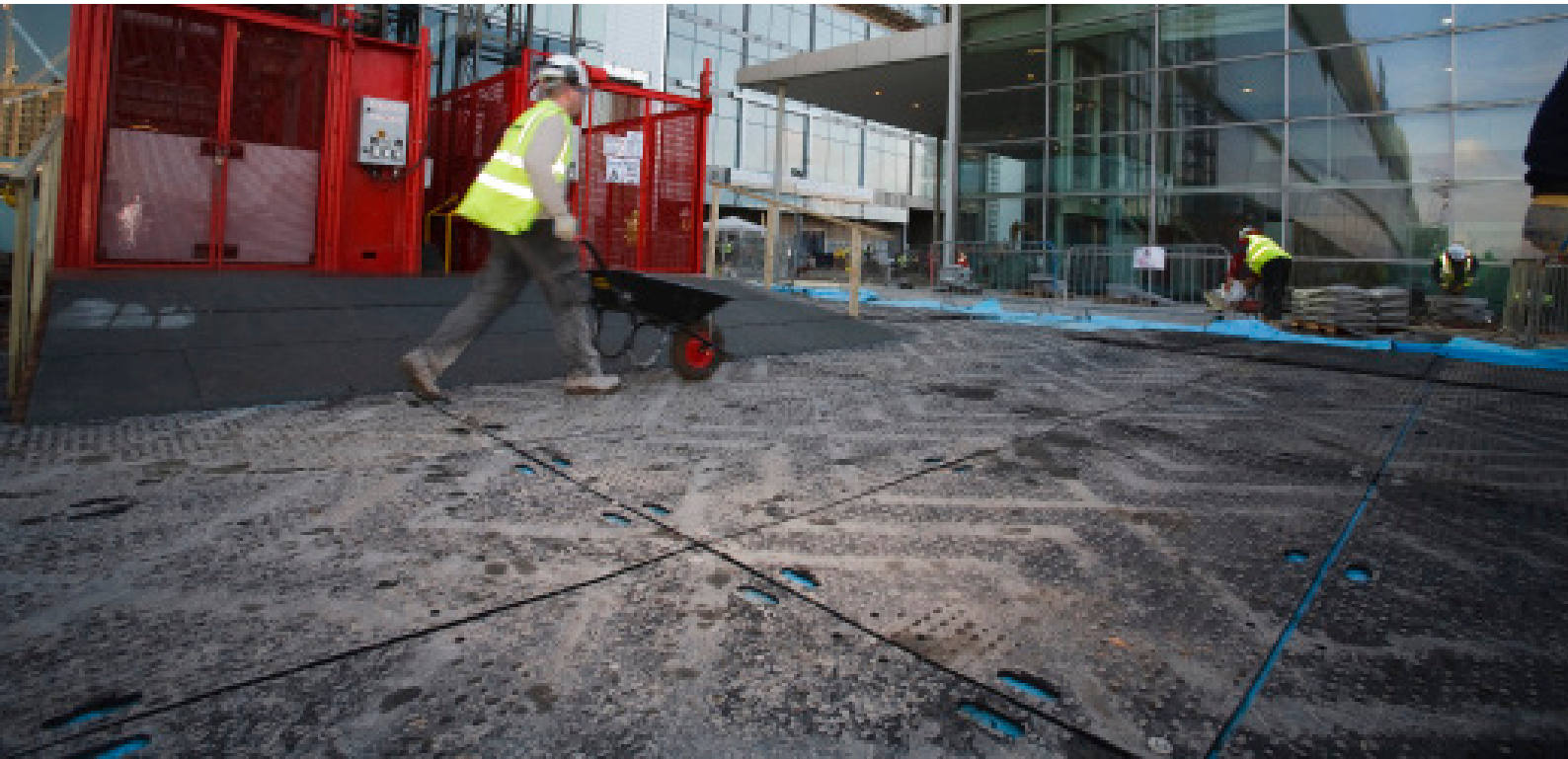
# TuffTrak<sup>®</sup>

## Ground Protection Solutions

### **EUROMAT<sup>®</sup>**

MEDIUM DUTY MAT WITH  
CHEVRON TRACTION<sup>®</sup>





EuroMat<sup>®</sup> is a market leading medium duty ground protection mat designed as an ideal manhandle-able solution in a wide range of applications including temporary roadways, work pads, depot storage areas, or as pedestrian access. Thanks to its flexible design, the mat is able to follow the contours of undulating or sloping ground conditions.

EuroMat<sup>®</sup> is light in weight and at just 35 kg it can easily be deployed by a two-person team, making EuroMat<sup>®</sup> fast and easy to install. EuroMat<sup>®</sup> also has strategically positioned hand holes for use ease of handling.

The mat features our unique chevron traction<sup>®</sup> surface design providing optimal grip and improved forward motion of vehicles, and a low profile surface on the reverse for use in pedestrian walkways. EuroMat<sup>®</sup> is available with the chevron traction<sup>®</sup> surface on both sides on request.

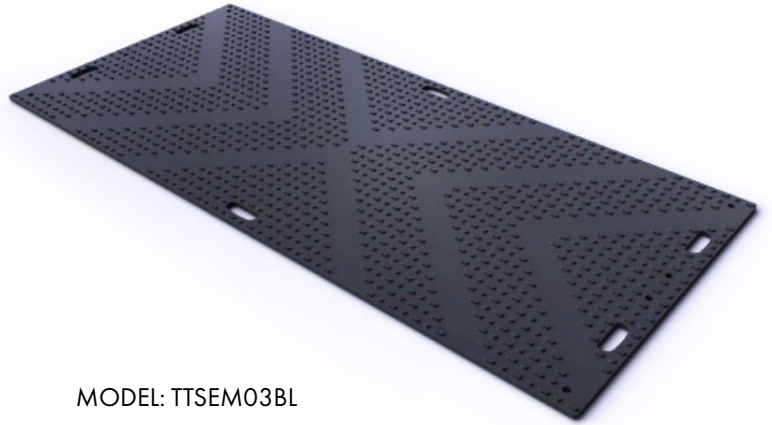
EuroMat<sup>®</sup> has a range of connector options available to suit any ground conditions including 4-way connectors, flex connectors and fast fit connectors for quicker installations.

- **100% recycled High Density Polyethylene (HDPE)**
- **Chevron traction<sup>®</sup> surface design for increased grip with a low profile surface on the reverse**
- **Hand holes for easy manoeuvrability**
- **Supports loads of up to 80 tons\***
- **Tough two or four-way urethane connectors**
- **Connection points at each corner of the mat**
- **Man-deployable**
- **Chevron traction<sup>®</sup> available on both sides on request**
- **Moulds to uneven or undulating ground conditions due to its flexibility**

**EuroMat<sup>®</sup> is a medium load capacity mat with chevron traction<sup>®</sup>.** EuroMat<sup>®</sup> has a load capacity of up to 80 tons\* and is lightweight, flexible, and durable. EuroMat<sup>®</sup> is ideal for use in construction, civil engineering, ground works, or event applications.

**Material:** 100% Recycled High Density Polyethylene

- 2410 mm x 1200 mm x 12 mm
- Weight 35 kg
- Load bearing capacity 80 tons\*
- Chevron traction<sup>®</sup> surface tread
- Pedestrian-friendly surface on the reverse
- Hand holes for easy manoeuvrability
- Range of connector options available
- Smooth finish



MODEL: TTSEM03BL

**APPLICATIONS**

- Civil engineering
- Construction
- Utilities
- Transmission
- Infrastructure
- Events

**ACCESSORIES**

**2-WAY CONNECTOR**

MODEL: TTASEM2WBL



**4-WAY CONNECTOR**

MODEL: TTASEM4WBL



Model	Description	Length	Width	Depth	Weight
TTSEM03BL	EuroMat <sup>®</sup>	2410 mm (94.8")	1200 mm (47.2")	12 mm (0.5")	35 kg (77 lbs)
TTASEM2WBL	2-Way Polyurethane Connector	180 mm (7")	50 mm (1.9")	-	0.1 kg (0.22 lbs)
TTASEM4WBL	4-Way Polyurethane Connector	180 mm (7")	180 mm (7")	-	0.3 kg (0.66 lbs)

\*Load bearing capacity is dependent on ground conditions. Sizing is subject to a manufacturing variance of +/- 5%.



TuffTrak® offers a full range of market leading composite ground protection mats delivering a safer work environment for temporary access roadways, trackways, working platforms, and turf protection.

**pittman** | traffic & safety  
equipment

B2 Athy Business Campus, Athy, Co. Kildare

Phone: 01 531 2111

[www.pittman.ie](http://www.pittman.ie)

[sales@pittman.ie](mailto:sales@pittman.ie)

**pittman**

traffic & safety  
equipment