

**Product Specification Sheet**

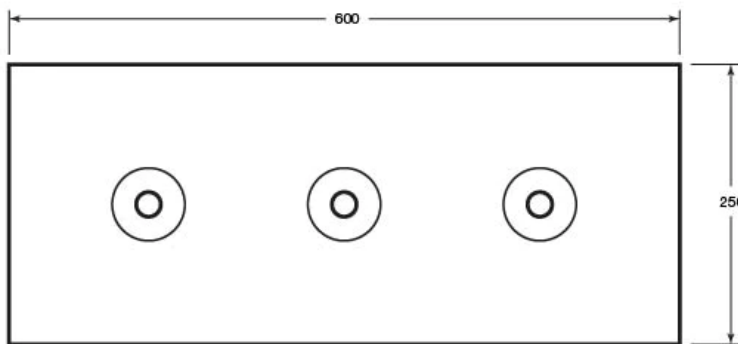
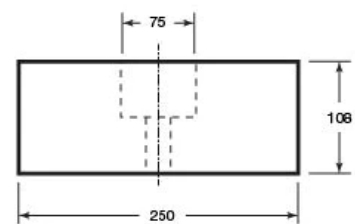
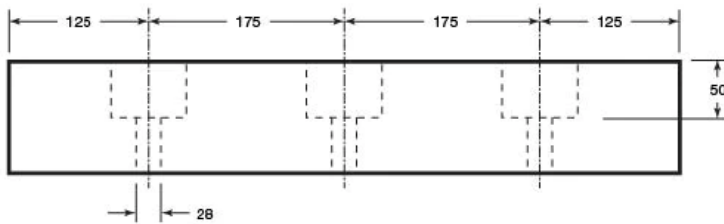
Product name – **Tall Dock Bumper**



Manufacturer / Brand	Pittman®
Warranty	1 year manufacturer's warranty
Material	Natural/ SBR Rubber
Components	Single piece bumper
Dimensions	600(l) x 100(d) x 250(w)mm
Weight	15.5kg
Features	Tall bumper - high traffic areas Made from natural/SBR rubber Bolts directly to dock No back or front plate 600mm length Fixings required but not included

**Ireland:**  
B2 Athy Business Campus  
Athy, Co. Kildare R14 PK74  
Ph: 01 531 2777  
Email: [sales@pittman.ie](mailto:sales@pittman.ie)

**United Kingdom:**  
1310 Solihull Parkway, Birmingham Business Park  
Birmingham B37 7YB  
Ph: 0121 630 3527  
[sales@pittman.uk](mailto:sales@pittman.uk)



Name	Dock Bumper
SKU	A006
Material	Natural/SBR Rubber
Weight (kg)	15.5



Any dimensions shown are indicative only. We use good quality commercial rubber compounds that are subject to variable shrinkage.

**Ireland:**  
 B2 Athy Business Campus  
 Athy, Co. Kildare R14 PK74  
 Ph: 01 531 2777  
 Email: [sales@pittman.ie](mailto:sales@pittman.ie)

**United Kingdom:**  
 1310 Solihull Parkway, Birmingham Business Park  
 Birmingham B37 7YB  
 Ph: 0121 630 3527  
[sales@pittman.uk](mailto:sales@pittman.uk)