



Product Code: 750212

XPT WHEEL STOP 1800MM

Bring vehicles to a halt within parking spaces

pittman[®]

OVERVIEW

The XPT Wheel Wheel Stop is designed for durability and visibility, making it a practical choice for busy parking areas. Made from fully recycled rubber, it's both eco-friendly and built to last, ensuring long-term reliability.

The bright reflective markings are integrated into the wheel stop itself, so they won't fade or peel like cheaper options, keeping visibility high even in low light.

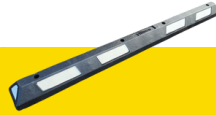
Installation is quick and hassle-free, with all necessary fixings included, whether you're working with concrete or tarmac. This means minimal disruption and maximum efficiency when it comes to improving safety on your site.

PRODUCT FEATURES

- Long-lasting design - 100% full recycled rubber design
- Highly visible - 10no. reflective markings on each wheel stop
- High quality markings - moulded, not stuck on like cheap alternatives
- Fixings included - universal coachscrews for concrete or tarmac
- Fast installation - one-piece design for fast on-site install

TECHNICAL DATA

SPECIFICATION			
SKU	750212	750213	756558
Material	100% recycled rubber		
Colour	Black with yellow markings	Black with white markings	Green with white markings
Length	1840mm		
Width	105mm		
Height	150mm		
Weight	16kgs		
Fixings Included	4no. universal M10 x 110mm coachscrews with 16 x 90mm rawlplug		
Applications	Suitable for use with cars and vans in indoor and outdoor parking facilities		



UNIVERSAL FIXINGS
Suitable for fixing into concrete or tarmac



MOULDED MARKINGS
Markings are moulded into the rubber, not stuck or painted on



INSTRUCTIONS FOR USE

- 1. Choose the Installation Surface:** The wheel stop can be securely bolted into concrete or tarmac using the provided universal fixings.
- 2. Mark the Holes:** Place the wheel stop firmly on the ground in the desired position. Use the wheel stop as a guide to mark the locations for the fixing holes. It is recommended to install the wheel stop 900mm from the top of a parking space.
- 3. Drill the Holes:** Move the wheel stop aside and drill holes where you marked. A 16mm drillbit is recommended.
- 4. Install the Wheel Stop:** Line up the wheel stop with the drilled holes. Then, bolt it securely into place.
- 5. Ready for Use:** Once installed, the wheel stop is ready to use immediately.